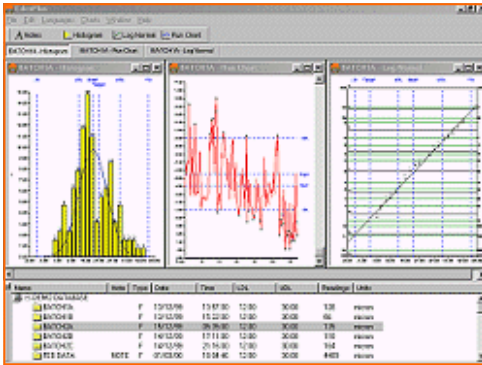


Elcometer EDCS⁺ Coatings Management



Elcometer EDCS⁺ Coatings Management Software

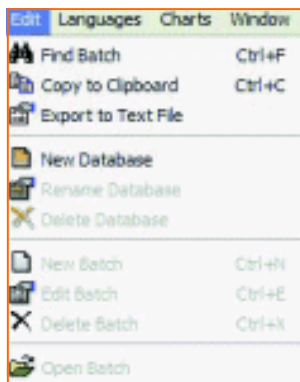
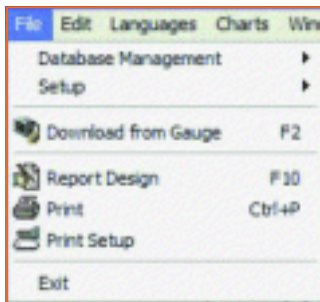
Elcometer EDCS⁺ Coatings Management Software

EDCS⁺ is a software program designed for the coating inspector and is an ideal tool for management of data collected from a wide range of Elcometer gauges.

EDCS⁺ takes Coatings Management Software to a new level. A simple to use software program that allows the operator to access professional inspection results and generate specialised reports for the customer or for ISO reports.

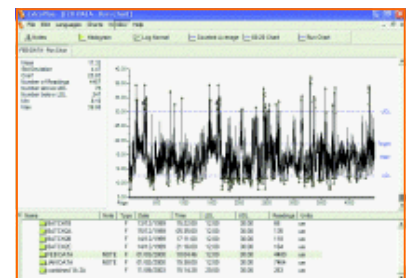
Inspection Management Software

Elcometer provide a complete range of free software packages designed for use with our gauges and other manufacturer's equipment. These software packages are either supplied with the appropriate instruments or can be downloaded from our website.

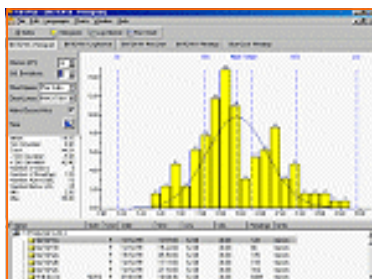


EDCS⁺ is so versatile - just look at some of the things that you can do with your data.

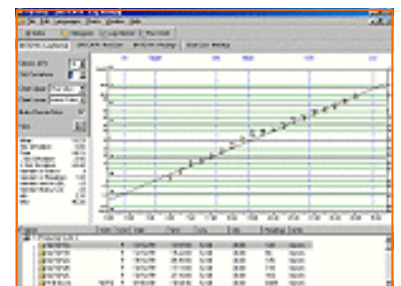
- Archive your data as you want to - organise your data as you need to see it - rename batches, set up folders for different customers
- Design your own reports to meet your corporate identity - add your company logo, photographs of the product under inspection, include summary data, etc
- Edit your data as you require
- Copy to clipboard and paste it into your own document
- Export data as a file to include in spreadsheet reports
- Create, delete and rename databases
- Open, create, edit and delete individual batches



Run Chart - explore the uniformity



Histogram - how spread out is your data from the target thickness?



Log Normal - how normal is your data?

Model	Description	Part Number
Elcometer 960	Elcometer EDCS ⁺ Coating Thickness Management Software	T96016488

Related products



Elcometer 355

Accuracy, simplicity, versatility and flexibility are the watchwords of the Elcometer 355, a truly state of the art hand-held measuring system packed with time-saving and cost cutting features. The key to the superiority of the Elcometer 355 is its measuring system which features a range of interchangeable Probe Modules capable of an accuracy of $\pm 1\%$ of the reading on a variety of coatings and substrates.



Elcometer 365

The increased demand on coating performance has resulted in a need for greater control throughout the coating process. The Elcometer 365 has been designed to provide a controlled method of coating inspection - thereby allowing the user to monitor the coating process, statistically (SPC). The data generated by the Elcometer 365 can alert the operator to alter the process before the coating parameters have been exceeded, avoiding costly re-work.



Elcometer 456

With its recently enhanced and simplified menu screen options, the Elcometer 456 remains the most advanced hand held coating thickness gauge on the market today. This flagship product is available in any combination of Basic, Standard and Top functionality; together with Integral (built in) and an extensive range of separate plug in probes. With such an extensive range of gauge options, there is an Elcometer 456 to meet your specific application needs.



Elcometer 345

The Elcometer 345 Coating Thickness Gauge is an incredibly versatile gauge. With a range of probes in both Integral or Separate probe versions for coating thickness measurements on Ferrous (F), Non Ferrous (N) or both Ferrous and Non Ferrous (FNF) Substrates, the Elcometer 345 will have a gauge for your requirements.

ENGLAND

Elcometer Instruments Ltd
Edge Lane
Manchester M43 6BU

Tel: +44 (0) 161 371 6000
Fax: +44 (0) 161 371 6010
e-mail: sales@elcometer.com
www.elcometer.com

USA

Elcometer Instruments Inc
1893 Rochester Industrial Drive
Rochester Hills Michigan 48309

Tel: +1 248 650 0500
Toll free: 800 521 0635
Fax: +1 248 650 0501
e-mail: inc@elcometer.com
www.elcometer.com

CANADA

Elcometer Canada Ltd
PO Box 622, 401 Ouelette Avenue
Windsor, Ontario N9A 6N4

Tel: +1 248 650 0500
Toll Free: 800 521 0635
Fax: +1 248 650 0501
e-mail: ca_info@elcometer.com
www.elcometer.com

ASIA & THE FAR EAST

Elcometer (Asia) Pte Ltd
896 Dunearn Rd
Sime Darby Centre #3-09
Singapore 589472,
Republic of Singapore

Tel: +65 6462 2822
Fax: +65 6462 2860
e-mail: asia@elcometer.com
www.elcometer.com

BELGIUM

Elcometer SPRL
Rue Vallée 13
B-4681 Hermalle /s Ardenteau

Tel: +32 (0)4 379 96 10
Fax: +32 (0)4 374 06 03
e-mail: be_info@elcometer.be
www.elcometer.be

FRANCE

Elcometer SARL
BP 8-Bou
60 Rue de la Petite Levée
45430 Chécy

Tel: +33 (0)2 38 86 33 44
Fax: +33 (0)2 38 91 37 66
e-mail: fr_info@elcometer.fr
www.elcometer.fr

GERMANY

Elcometer Instruments GmbH
Himmlingstraße 18
D-73434 Aalen

Tel: +49 (0) 7366 91 92 83
Fax: +49 (0) 7366 91 92 86
e-mail: de_info@elcometer.de
www.elcometer.de